

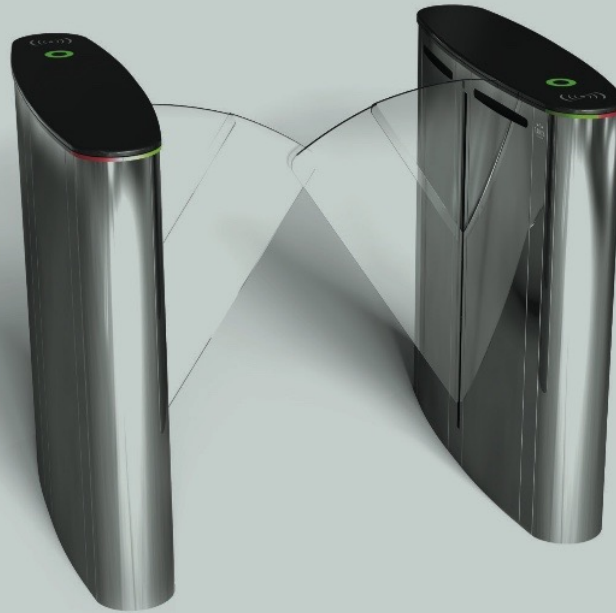


TANSA

SINCE 1962

TANSASECURITY.COM

LTOP 111H



TECHNICAL SPECIFICATIONS

Operation	Controlled or control-free entrance/exit in both directions
IP standart	IP44 (for indoor use)
Chassis	AISI 304 quality stainless steel, oval nose
Wings	Angular dual wing with 8 mm tempered glass
Upper Table	10 mm Black Tempered Glass
Functions	Works bidirectionally and allows the passage of a single person only with its microprocessor control, electronic passage memory feature saves in memory card swipes that occur before a passage is completed and allows them to pass without closing the wings.
Mechanism	With its mechanical torque control, the unit does not cause injury in the event of any jamming.
Emergency Mode	Unit switches in to "emergency mode" with the signal received from the fire detection system in cases of emergency, opening wings to allow passage; with the optional battery supply, the wings automatically open during a power cut, allowing passage.

Sensors	Each turnstile has 6 set of photo-electric sensors.
Safety Level Setting	With two custom-defined safety levels, the unit can be set up to prevent and/or notify trespassing, reverse passage and unauthorized passages of any kind by means of an audio or stealth warning.
Operating Voltage	220 VAC, 60 Hz
Power Consumption	40 W during passages, 10 W during stand-by
Operating Temperature	-20°C / +50°C
Passage Speed	25 persons / minute
Passage Width	90 cm
Weight	80 kg (Single Wing)
Security Level	Deterrent
Areas of Use	Suitable for indoor use

