

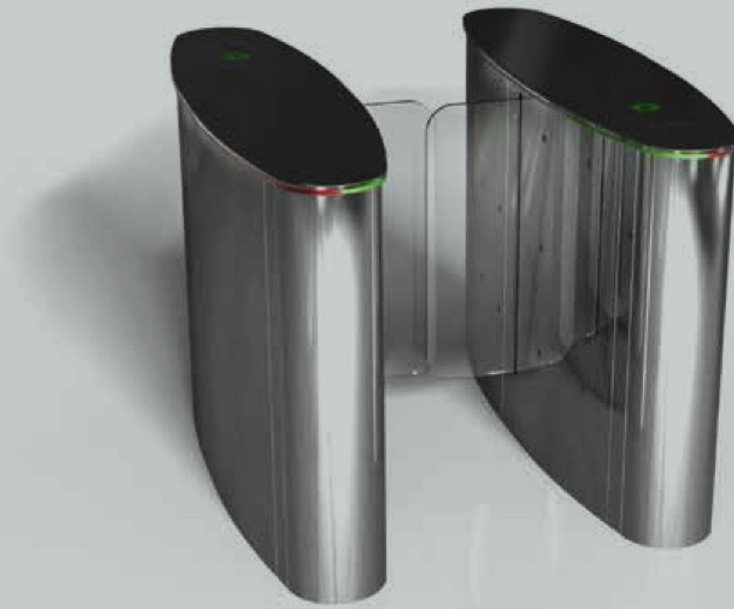


TANSA

SINCE 1962

WWW.TANSASECURITY.COM

LTOP 201



TECHNICAL SPECIFICATIONS

Operation	Controlled or control-free entrance/exit in both directions	Safety Level Setting	With four custom-defined safety levels, the unit can be set up to prevent and/or notify trespassing, reverse passage and unauthorized passages of any kind by means of an audio or stealth warning.
Chassis	AISI 304 quality stainless steel, oval nose	Operating Voltage	220 VAC, 60 Hz
Wings	Linear movement, 10 mm tempered glass	Power Consumption	50 W during passages, 10 W during stand-by
Upper Table	10 mm Black Tempered Glass	Operating Temperature	-20°C / +50°C
Functions	Works bidirectionally and allows the passage of a single person only with its microprocessor control, electronic passage memory feature saves in memory card swipes that occur before a passage is completed and allows them to pass without closing the wings.	Passage Speed	40 persons / minute
Mechanism	With its adjustable mechanical torque control, the unit does not cause injury in the event of any jamming.	Passage Width	55 cm
Sensors	Each turnstile has 8 set of photo-electric sensors.	Weight	140 kg (Single Wing)
Emergency Mode	Unit switches in to "emergency mode" with the signal received from the fire detection system in cases of emergency, opening wings to allow passage; with the optional battery supply, the wings automatically open during a power cut, allowing passage.	Security Level	Deterrent
		Areas of Use	Suitable for indoor use

