



ANTI-RAM BOLLARDS

- High Security Anti-Ram Bollards
PAS68/IWA-14 Crash Tested (K-4 / K-12)
- Semi - Automatic Anti-Ram Bollards
- Hydraulic Anti-Ram Bollards
- Fixed Anti-Ram Bollards

TANSA
SECURITY



ANTI-RAM BOLLARDS



ROAD BLOCKERS



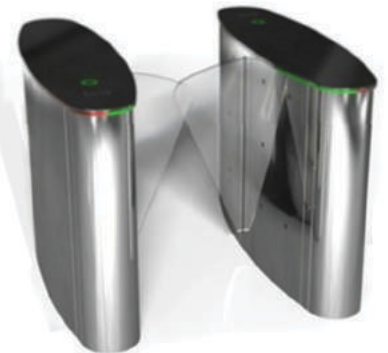
ROAD TRAPS



ARM BARRIERS



PARKING CONTROL SYSTEMS



TURNSTILES

ABOUT US

Tansa has been operating as a manufacturing company in the field of security automation since 2006. The secret to our success is the importance we give to R&D, our customized products tailored to your specific needs, and our innovative products, all of which are offered to our customers by an experienced team of experts. With high-capacity production, Tansa's products come with quality certificates that conform to world standards, and we count large national and international corporations among our clients. With our rich portfolio of products for high-security barrier systems and parking control systems, and with our dynamic structure, quality products and customer-oriented service concept, every year we aim to get better than the year before. As we grow, we contribute more and more to the environment and urban plans of future years, ensuring your security and endeavouring to make your life peaceful.

High Security Anti-Ram Bollards PAS68/IWA:14 K-4 / K-12



Overview

Tansa High-Security / K – 12 Rising Bollards is a security product specifically designed for risks of any kind of assassination with a vehicle. Produced specifically for areas with high levels of security, its operation system, impact resistance and use are completely different from other standard products. License Plate Recognition (Automatic Access System—AAS), Card Readers, etc. can be integrated into the system. Besides being a producer, Tansa also provides special solutions to its customers, conducting a risk analysis of the area with its security staff and engineers.

Specifications

Diameter	Ø 273 - 300 - 323 mm	Manually	Ball Valve
Length	900 - 1100 mm	Manual Lifting	Hand Pump
Wall Thickness	30 - 50 - 70 mm	Can be connected to any kind of Access control system	License Plate Recognition, Card Reader, etc
Moving Part	Powder Coating /304-316 Stainless	OPTIONAL	
Mortise and Tenon Joinery	Hot-dip Galvanized	Power Outage	Accumulator Support
Connection Points	M8 x 30 Imbus Bolt (Stainless)	Warning Equipment	Flasher / Traffic Lamp
Collision Energy	1902.66 KJ	E.F.O. Circuit For Emergency Lifting	Yes 2 sec.
Penetration	P1	Control Panel	PLC (Programmable Logic Controller)
Operating Speed	7-9 sec.	System Security Support	Safety Photocell
Control Panel	A-GA Board	Hydraulic System Heating- Cooling	
System Security Support	Loop Sensor	Water Drain Pump	
Movement Mechanism	Hydraulic		
Min. Operating Pressure	60 bar /870 psi		
Max. Operating Pressure	100 bar /1450 psi		
Hydraulic Hose	R2 1/2 330 Bar		
Hydraulic Oil	32/46/68		
Unit Operating Voltage	220/380 V (AC)		
Operating Temperature	-25 °C / +50 °C		



Hydraulic Anti-Ram Bollards



Overview

Tansa Hydraulic Bollards resistant to impacts and weather conditions are manufactured from European norm 304 Quality Stainless steel with advanced technology. The diameter and height of the bollards vary according to the area requirements or desired safety level. The electronic characteristics enable the lowering/raising to be controlled by any entry control system including all types of card readers, remote control, biometric readers recognizing fingerprints, automatic plate recognition system or even a simple control button. Whatsmore, the safety accessories like magnetic loop detectors, photocells, flashing lights or red/green traffic lights might be easily integrated into the system.

Specifications

Diameter	Ø 219 - 273 - 300 - 323 mm	OPTIONAL	
Length	500 - 700 - 900 - 1100 mm	Manual Lifting	Manual Lifting
Wall Thickness	8 - 10 - 14 mm	Power Outage	Accumulator Support
Moving Part	Powder Coating / 304-316 Stainless	System Security Support	Safety Photocell
Mortise and Tenon Joinery	Hot-dip Galvanized	Warning Equipment	Flasher / Traffic Lamp
Connection Points	M8 x 30 Imbus Bolt (Stainless)	Control Panel	PLC (Programmable Logic Controller)
Operating Speed	4-6 sec.	E.F.O. Circuit For Emergency Lifting	Yes 2 sec.
Control Panel	A-GA Board	Hydraulic System Heating- Cooling	
System Security Support	Loop Sensor	Water Drain Pump	
Min. Operating Pressure	40 bar / 580 psi		
Max. Operating Pressure	60 bar / 870 psi		
Hydraulic Hose	R2 3/8 330 Bar		
Hydraulic Oil	32/46/68		
Unit Operating Voltage	220/380 V (AC)		
Operating Temperature	-25 °C / +50 °C		
Manually	Ball Valve		
Can be connected to any kind of Access control system	License Plate Recognition, Card Reader, etc.		



Semi - Automatic Anti-Ram Bollards



Overview

Tansa Semi - Automatic Anti-Ram Bollards are made with new production technology by Tansa. This product is produced designed for your easy use in any place without need of electric power supply.

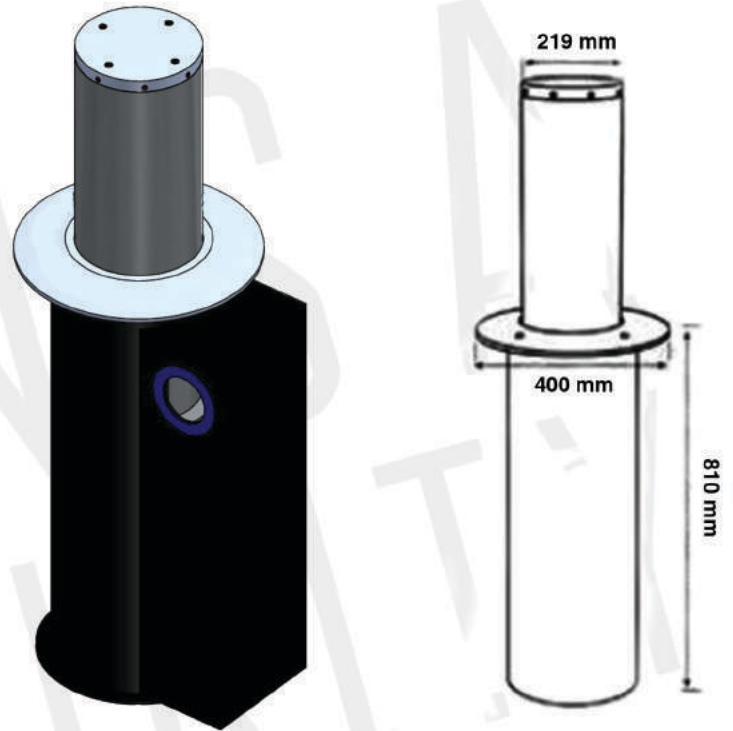
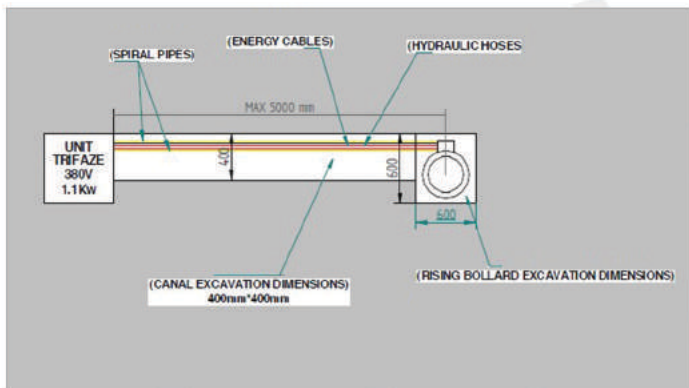
Specifications

Diameter	Ø 76 - 89 - 114 - 219 - 273 mm
Length	360 - 500 - 600 - 700 mm
Wall Thickness	4 - 8 - 10 - 14 mm
Moving Part	Powder Coating (304-316 Stainless)
Mortise and Tenon Joinery	Hot-dip Galvanized
Connection Points	M8 x 30 İmbus Bolt (Stainless)
Operation Type	Manual - Gas Piston (Automatic locking)
Operating Temperature Range	-25 °C / +50 °C
Warning Equipment	Warning Lights, Solar LED (Red, Green)

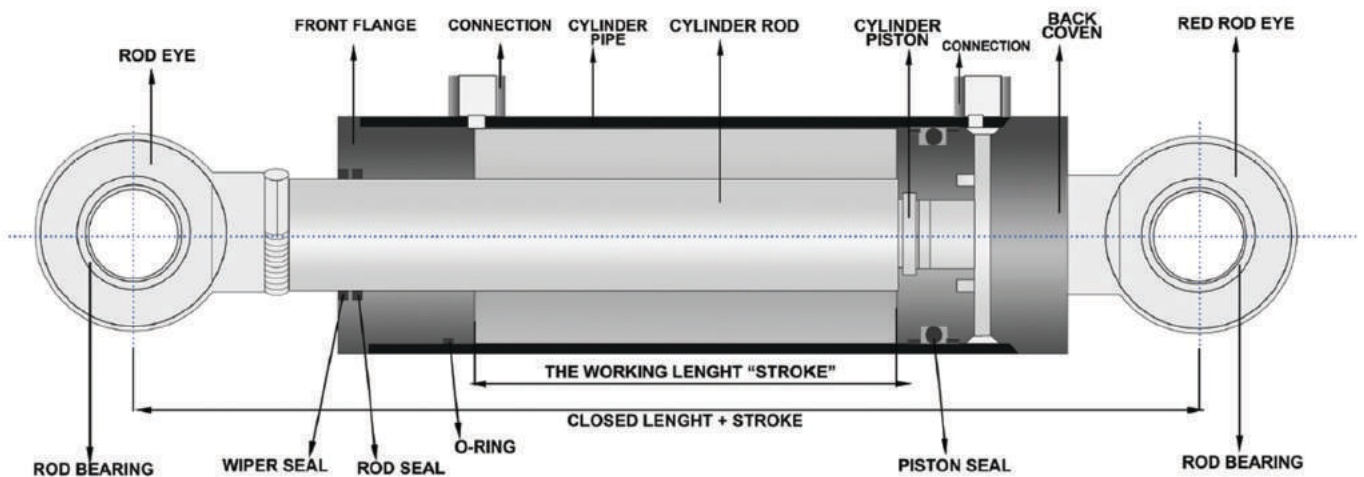


Product Drawing

Sample substructure drawing



Piston Drawing



Fixed Anti-Ram Bollards



Overview

Resistant to weather conditions and impacts, fixed Rising Bollards are especially used in public spaces and private property, and can be produced in different diameters and heights in accordance with the requirements of the area.

Production and assembly methods :Designed to be cemented to the ground, fixed on the surface, or to have a lock-unlock feature. Tansa fixed rising bollards do not only contribute to your safety but also adds value to your architectural design.

Specifications

Diameter	Ø 76 - 89 - 114 - 219 - 273 - 300 - 323 mm
Length	500 - 600 - 700 - 900 - 1000 mm
Wall Thickness	4 - 8 - 10 - 14 - 20 - 26 - 30 - 40 mm, or any customized length
Operation Type	Fixed, Floor concreting, locked or dismantled if necessary.
Fixed Part	Powder Coating (304-316 Stainless)



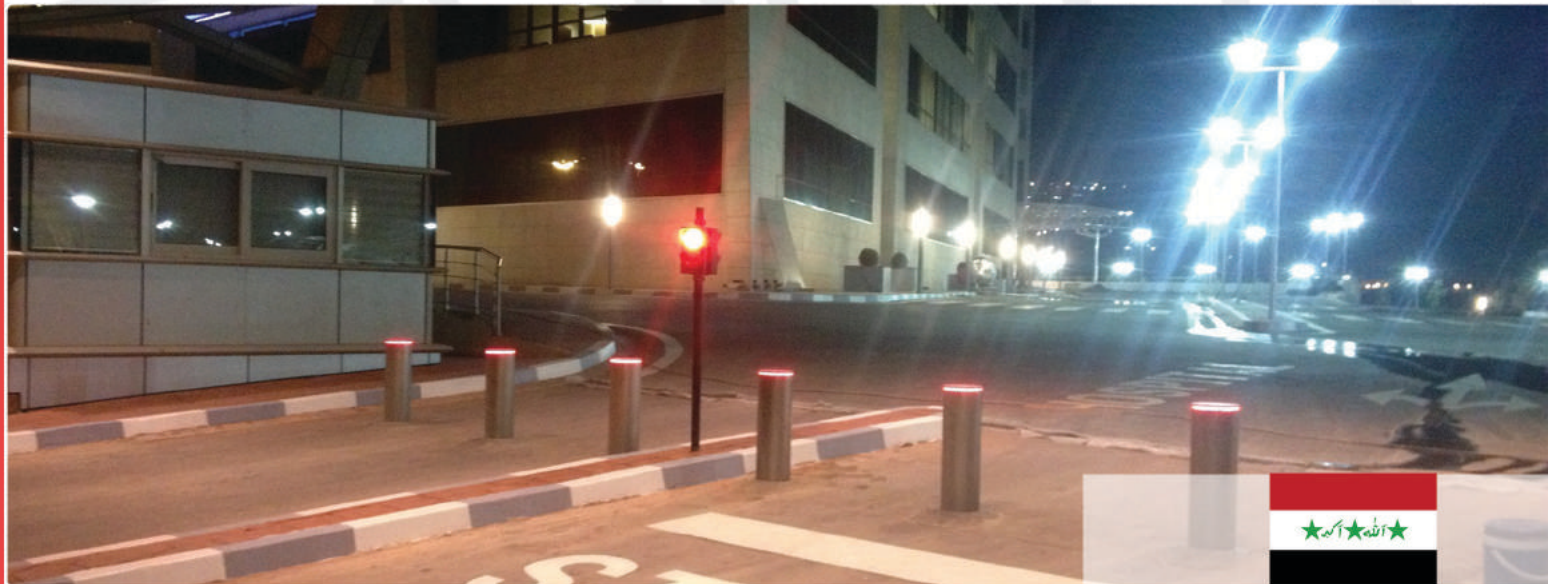
References



Crash Test



References



References



References

